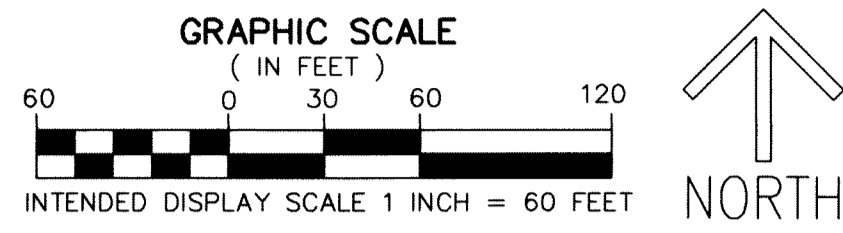


# PALM BEACH PARK OF COMMERCE, P.I.P.D. - PLAT 23

BEING A REPLAT OF A PORTION OF CALBUT GENPAR TRACT A,  
AS RECORDED IN PLAT BOOK 45, PAGES 70 AND 71 OF THE PUBLIC RECORDS OF PALM BEACH COUNTY, FLORIDA,  
TOGETHER WITH A PORTION OF SECTION 19, TOWNSHIP 41 SOUTH, RANGE 41 EAST,  
LYING IN SECTION 19, TOWNSHIP 41 SOUTH, RANGE 41 EAST, PALM BEACH COUNTY, FLORIDA.



### NOTES COORDINATES, BEARINGS AND DISTANCES

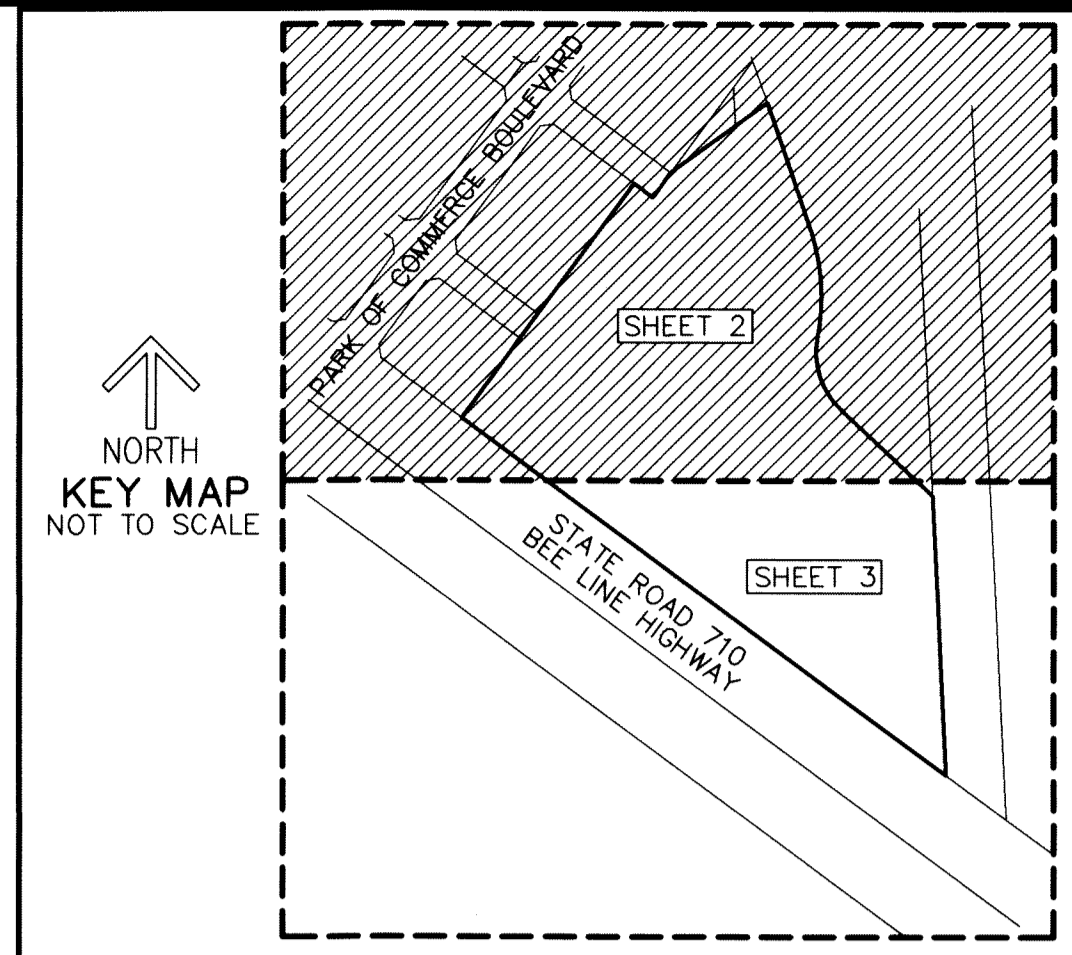
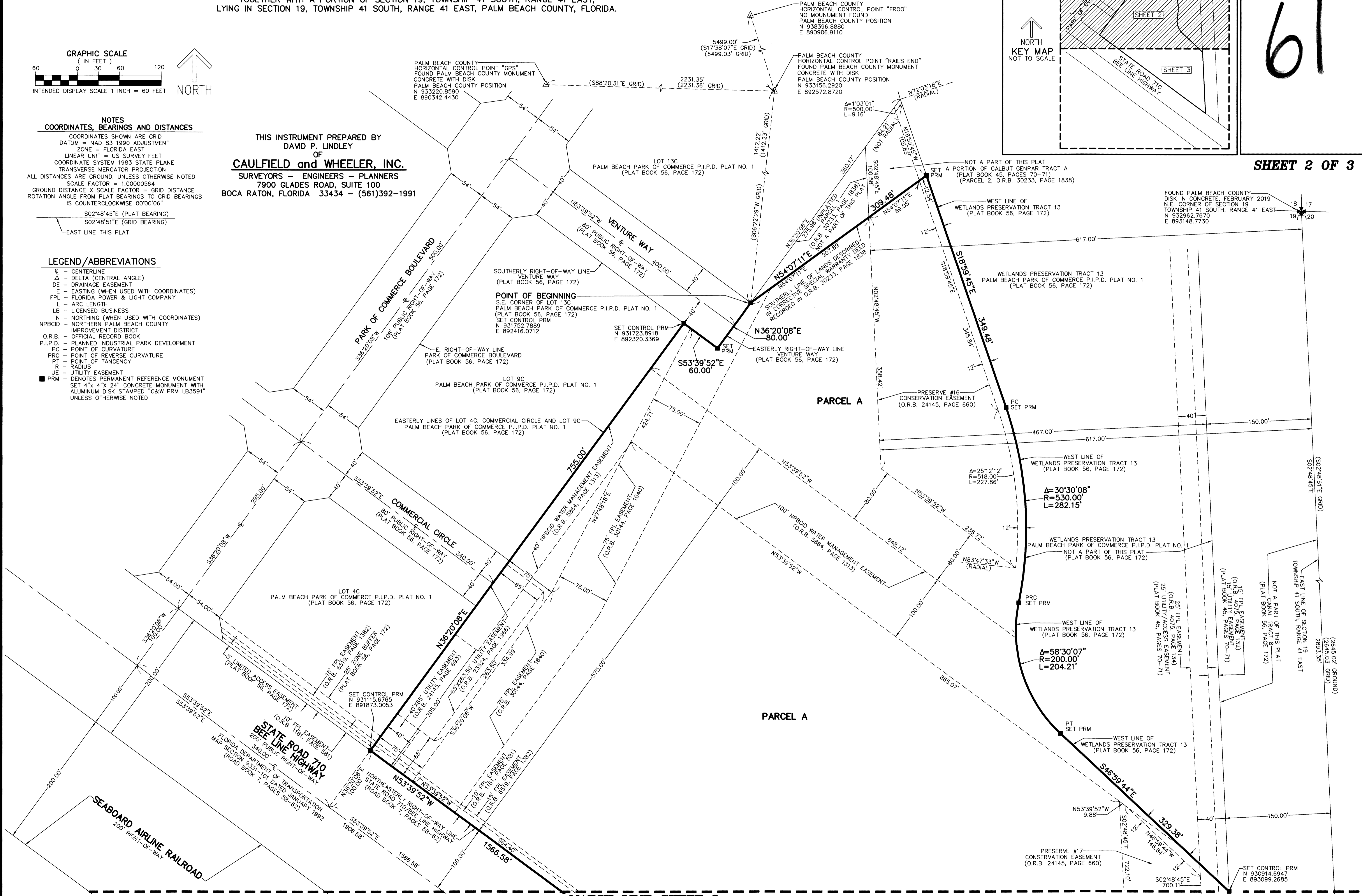
COORDINATES SHOWN ARE GRID  
DATUM = NAD 83 1990 ADJUSTMENT  
ZONE = FLORIDA EAST  
LINEAR UNIT = US SURVEY FEET  
COORDINATE SYSTEM 1983 STATE PLANE  
TRANSVERSE MERCATOR PROJECTION  
ALL DISTANCES ARE GROUND, UNLESS OTHERWISE NOTED  
SCALE FACTOR = 1.00000564  
GROUND DISTANCE X SCALE FACTOR = GRID DISTANCE  
ROTATION ANGLE FROM PLAT BEARINGS TO GRID BEARINGS  
IS COUNTERCLOCKWISE 00°00'06"

S02°48'45"E (PLAT BEARING)  
S02°48'51"E (GRID BEARING)  
EAST LINE THIS PLAT

### LEGEND/ABBREVIATIONS

- ⊙ - CENTERLINE
- Δ - DELTA (CENTRAL ANGLE)
- DE - DRAINAGE EASEMENT
- E - EASTING (WHEN USED WITH COORDINATES)
- FPL - FLORIDA POWER & LIGHT COMPANY
- L - ARC LENGTH
- LB - LICENSED BUSINESS
- N - NORTHING (WHEN USED WITH COORDINATES)
- NPBCID - NORTHERN PALM BEACH COUNTY IMPROVEMENT DISTRICT
- O.R.B. - OFFICIAL RECORD BOOK
- P.I.P.D. - PLANNED INDUSTRIAL PARK DEVELOPMENT
- PC - POINT OF CURVATURE
- PRC - POINT OF REVERSE CURVATURE
- PT - POINT OF TANGENCY
- R - RADIUS
- UE - UTILITY EASEMENT
- PRM - DENOTES PERMANENT REFERENCE MONUMENT SET 4" x 4" x 24" CONCRETE MONUMENT WITH ALUMINUM DISK STAMPED "C&W PRM LB3591" UNLESS OTHERWISE NOTED

THIS INSTRUMENT PREPARED BY  
**DAVID P. LINDLEY**  
OF  
**CAULFIELD and WHEELER, INC.**  
SURVEYORS - ENGINEERS - PLANNERS  
7900 GLADES ROAD, SUITE 100  
BOCA RATON, FLORIDA 33434 - (561)392-1991



61

SHEET 2 OF 3

MATCH LINE SHEET 3